

## **Historic, Archive Document**

Do not assume content reflects current scientific knowledge, policies, or practices.



# *Iris - Now in Bloom*

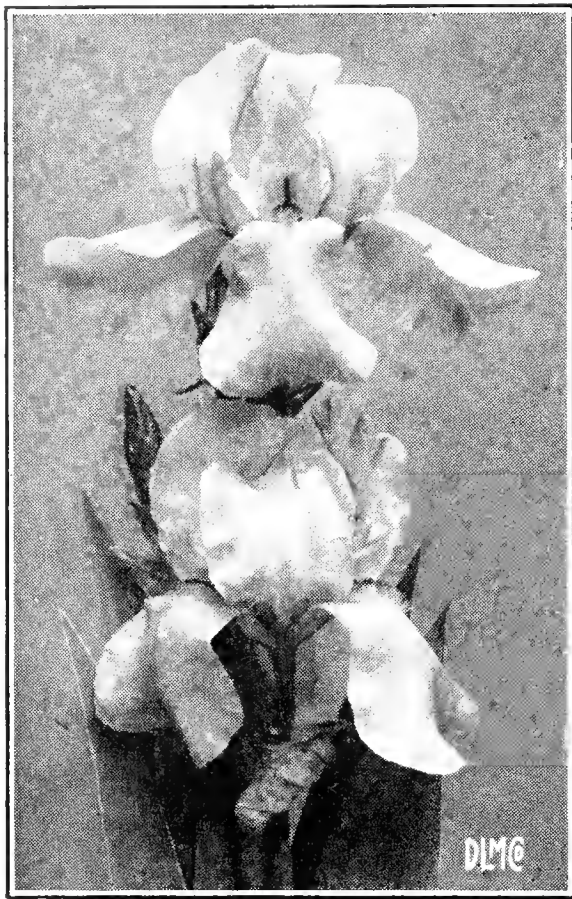


## **ROSEDALE NURSERIES**

Sawmill River Parkway at Eastview

**TARRYTOWN, N. Y.**

Tel., Tarrytown 2620



*Blue Monarch*

Some of the better  
Varieties to look for  
are—

GERMAN IRIS

BLUE MONARCH  
DEPUTE NOMBLOT  
EASTER MORN  
GUDRUN  
PLUIE D'OR  
TALISMAN

JAPANESE IRIS

AMETHYST  
RED RIDING HOOD  
SUFO-NO-KOI

SIBERIAN IRIS

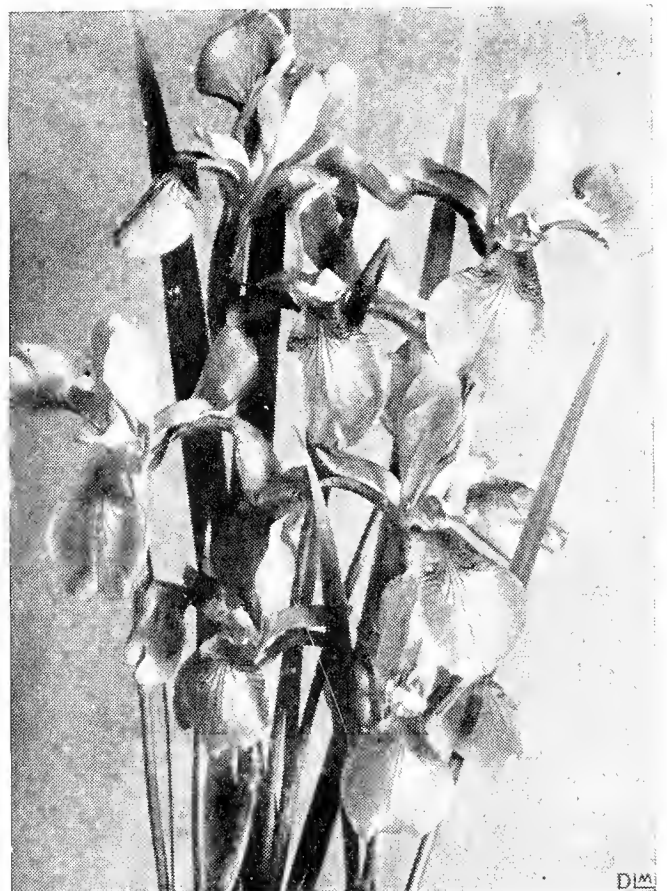
PERRY'S BLUE

---

See the SPECIAL  
VISITOR'S IRIS OFFER  
on Center Spread

## *Rosedale's* MOST BEAUTIFUL SPECTACLE

Mere words or even pictures cannot adequately describe the gorgeous forms and exquisite tints of the beautiful garden orchid—the Iris. Our beds are full of new and interesting forms which each day bring forth a new riot of color—each seeming more beautiful than its predecessor. Some are of gigantic size, some are small and dainty but all are of distinctive coloring. Pick out your Iris from the blooming plants and get the colors you desire. The first blooms to appear are the German Iris about the last of June, these are followed by the Siberian and then by the Japanese. Some of the blooms of the latter are as big as a dinner plate. Come and see this display.



*Siberian—Perry's Blue*

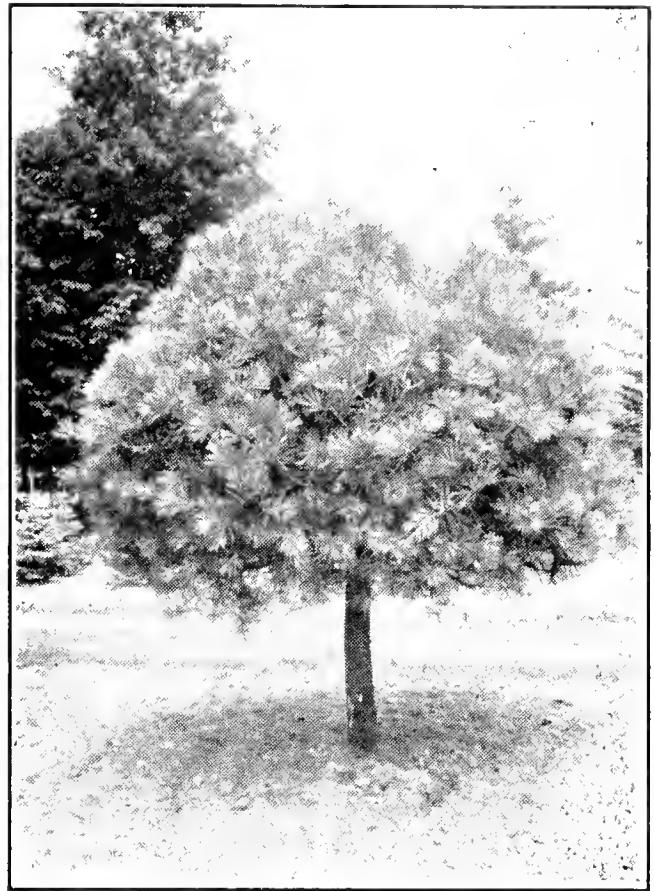
Rosedale's

EVERGREENS ARE  
AT THEIR HEIGHT

Now is the time to take stock of your evergreens and select any necessary replacements or additions to your present planting. The new growth will soon be too far advanced to transplant with safety. Almost every variety will transplant well right now—especially the Broadleaved types. There is no need to postpone this planting until Fall and lose the pleasure of having the plants this Summer. The Rosedale stock consists of only the varieties which have proven themselves thoroughly acclimated to conditions in this section. You have thousands of evergreens in over eighty varieties from which to choose.



*Juniperus virginiana glauca*



*Espalier Pine*

We highly recommend  
the following—

LOW GROWING TYPES—

SARGENT'S JUNIPER

JUNIPERUS HORIZONTALIS GLAUCA

JUNIPERUS DEPRESSA PLUMOSA

SARGENT'S WEEPING HEMLOCK

HATFIELD'S SPREADING YEW

HUNNEWELL SPREADING YEW

DWARF JAPANESE YEW

UPRIGHT TYPES—

ORIENTAL SPRUCE

HATFIELD'S UPRIGHT YEW

HICKS' YEW

CAROLINA HEMLOCK

COLUMNAR JUNIPER

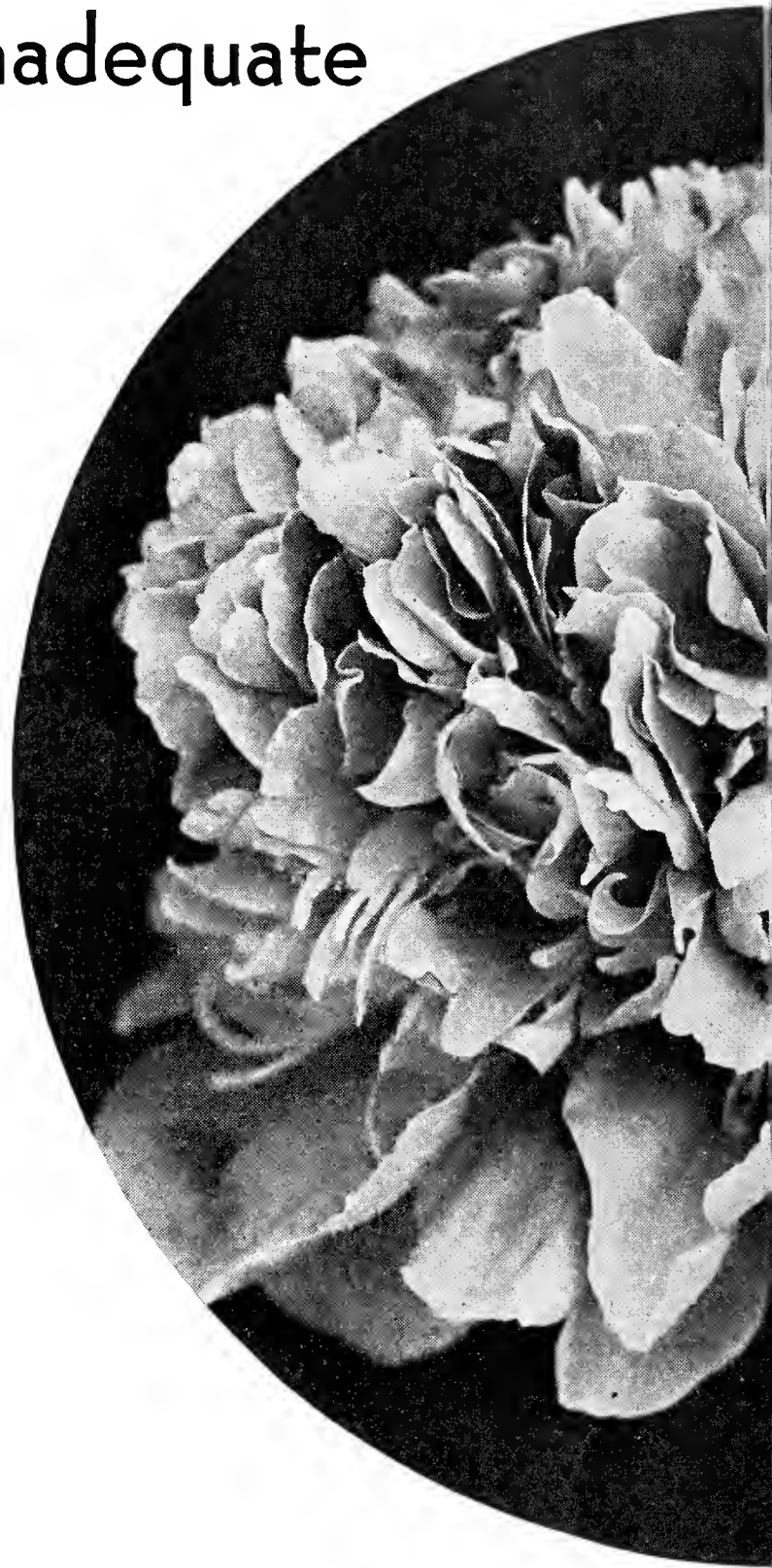
ALBERTA SPRUCE

FRASERI FIR

# Choose Your Peonies

## Descriptions are inadequate

It is our honest belief that nowhere in Westchester County can be found a greater variety of fine Peonies than at our nurseries. For over 25 years Peonies have been a specialty with us and the stock we present is the result of careful selection of the best varieties and rejection of the inferior. We have developed a collection of which we are justly proud. We believe that your visit during blooming season will amply repay you. Under average weather conditions they will be at the height of their bloom from June 5th to June 15th. There are over 100 varieties of all types to choose from, and all are plainly marked. Of course, they should not be dug at this time, so after you have made your selection from the actual blooms your order will be filed, and the



*Special Vi*

### IRIS

AMBASSADEUR. Rich ruby red. . . . .	\$0.25
ALCAZAR. Bluish violet and purple. . . . .	.25
DEJAH. Silvery blue and dark blue. . . . .	.25
GOLD IMPERIAL. White. . . . .	.25
MILDRED PRESBY. White and purple. . . . .	.25
TRUE CHARM. White and lavender. . . . .	.25

**SPECIAL 6 for \$1.25 . . . . . Value \$1.50**

# from Actual Blooms

and sometimes deceiving



*Tourangelle*

plants delivered promptly after Labor Day. Whether you are in the market for new Peonies or not, you are very welcome and we will gladly answer any question as to their culture.

Some of the Outstanding Varieties to Look for Are—

## DOUBLE PEONIES

- ADOLPHE ROUSSEAU
- LE CYGNE
- LONGFELLOW
- MARIE JACQUIN
- MME. JULES DESSERT
- MONS. JULES ELIE
- SOULANGE
- TOURANGELLE

## JAPANESE PEONIES

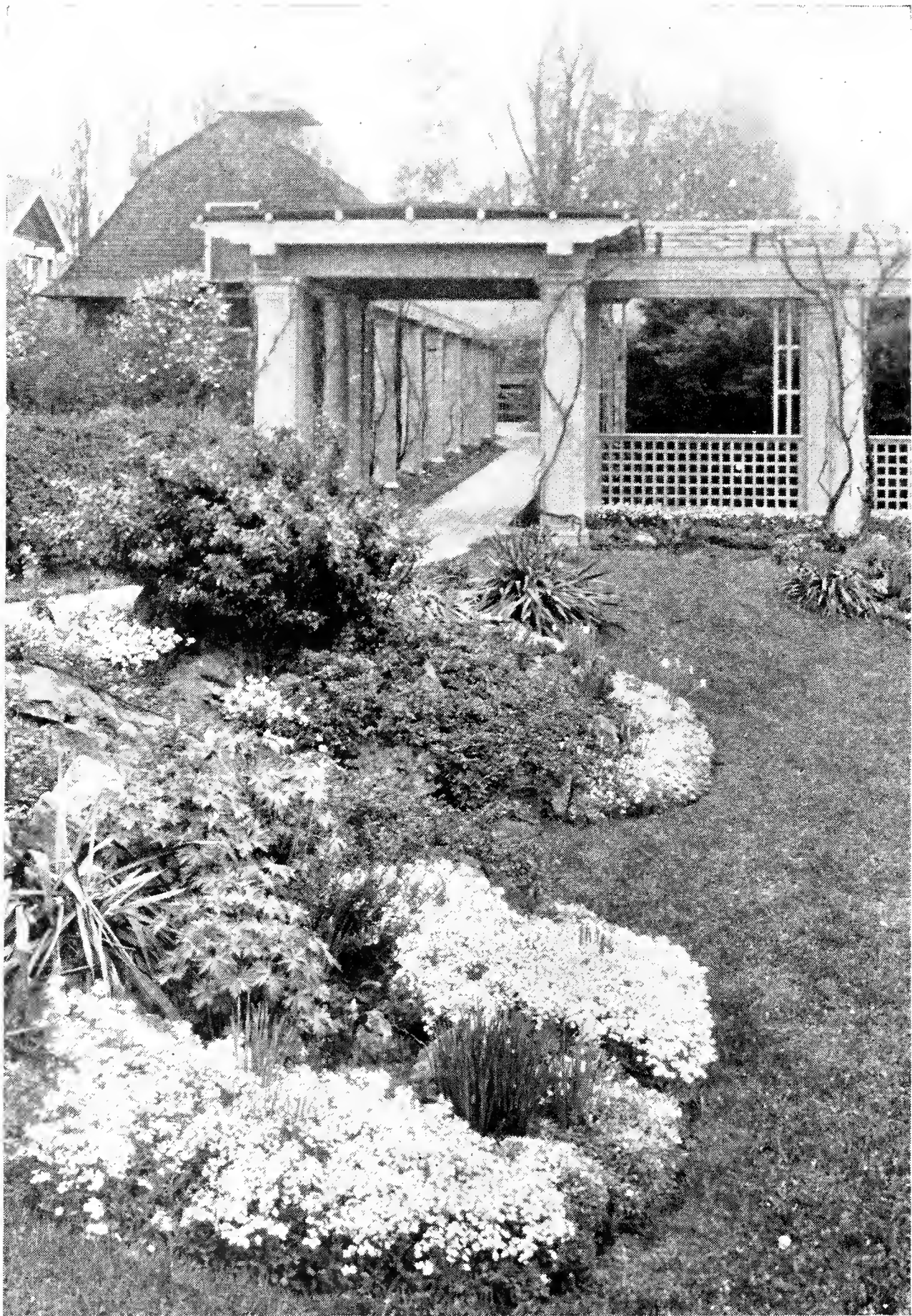
- MIKADO
- TOKIO

Special Offers

## PEONIES

MONS. JULES ELIE.	Lilac rose, silvery edged.	
Fragrant.....		\$0.60
AVALANCHE.	Tall variety with cream white flowers.....	.75
THERESE.	Flesh color lightly shaded pink.....	1.00
LUCIENNE.	Large, single white flower.....	1.00

**SPECIAL 4 for \$3.00 . . . . . Value \$3.35**



*Some of the Finest Perennials  
are in Bloom Right Now!*



# *Flowering Shrubs in Bloom*

Another gorgeous display of Nature's handiwork is in evidence at this time—the Flowering Shrubs. Among the better ones to see are HYBRID MOCKORANGE, BEAUTYBUSH, KOREAN SPIREA and WEIGELA. It is far easier to choose those you want at this time of the year than when they are in their dormant state. Many shrubs can easily be transplanted at this time with special attention.

# *To Say Nothing of the Perennial*

No home landscape, whether large or small, can do without some perennials. These colorful plants are delightful in beds and borders and when carefully selected will produce almost continuous bloom throughout the growing season. They are easily grown, responding generously to a minimum amount of care. This is the time when the largest number of varieties are in full bloom. Visit our nursery and browse among the beds. The types are so many and so varied.

Among those in bloom are:

COLUMBINE  
SCOTT ELLIOTT HYBRIDS  
CARNATION  
GRENADIN RED  
DELPHINIUM HYBRIDS  
PYRETHRUM  
PRIMULA  
TROLLIUS  
VERONICA  
VIOLAS

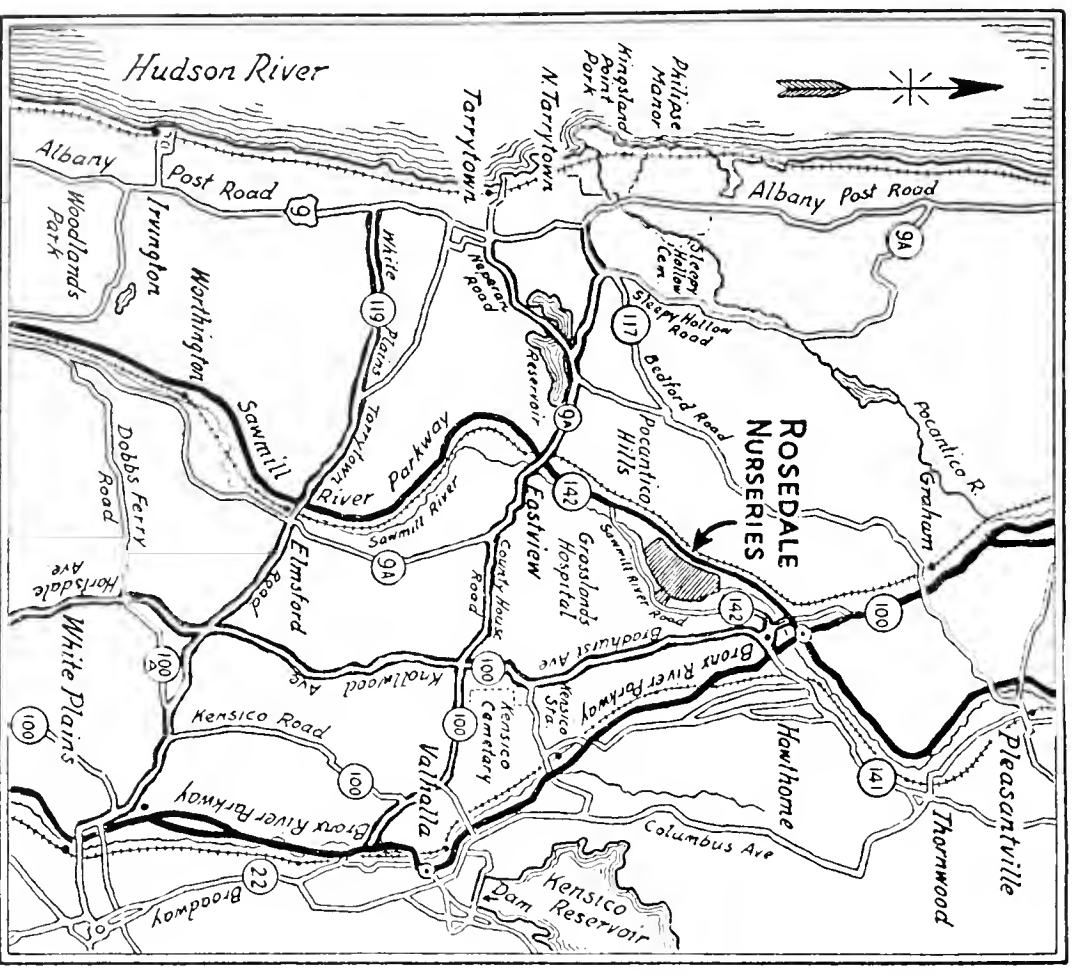
---

You could not pick a more enjoyable time to visit us. Right now you can see IRIS, PEONIES, FLOWERING SHRUBS and PERENNIALS in their gorgeous Spring blossoms. There is always a competent horticulturist available to show you around and answer any questions you may ask. We wish that every garden lover would take the time to see this Spring display.

---

# ROSEDALE NURSERIES

## TARRYTOWN, N. Y.



VISIT US—A PLEASING  
DRIVE ON THE COUNTY'S  
BEAUTIFUL PARKWAYS

U. S. Dept. Of Agric.  
Bureau of Plant Industry  
Washington, D. C.

Sec. 562, P. L. & R.  
U. S. POSTAGE  
**Paid**  
TARRYTOWN, N. Y.  
Permit No. 2